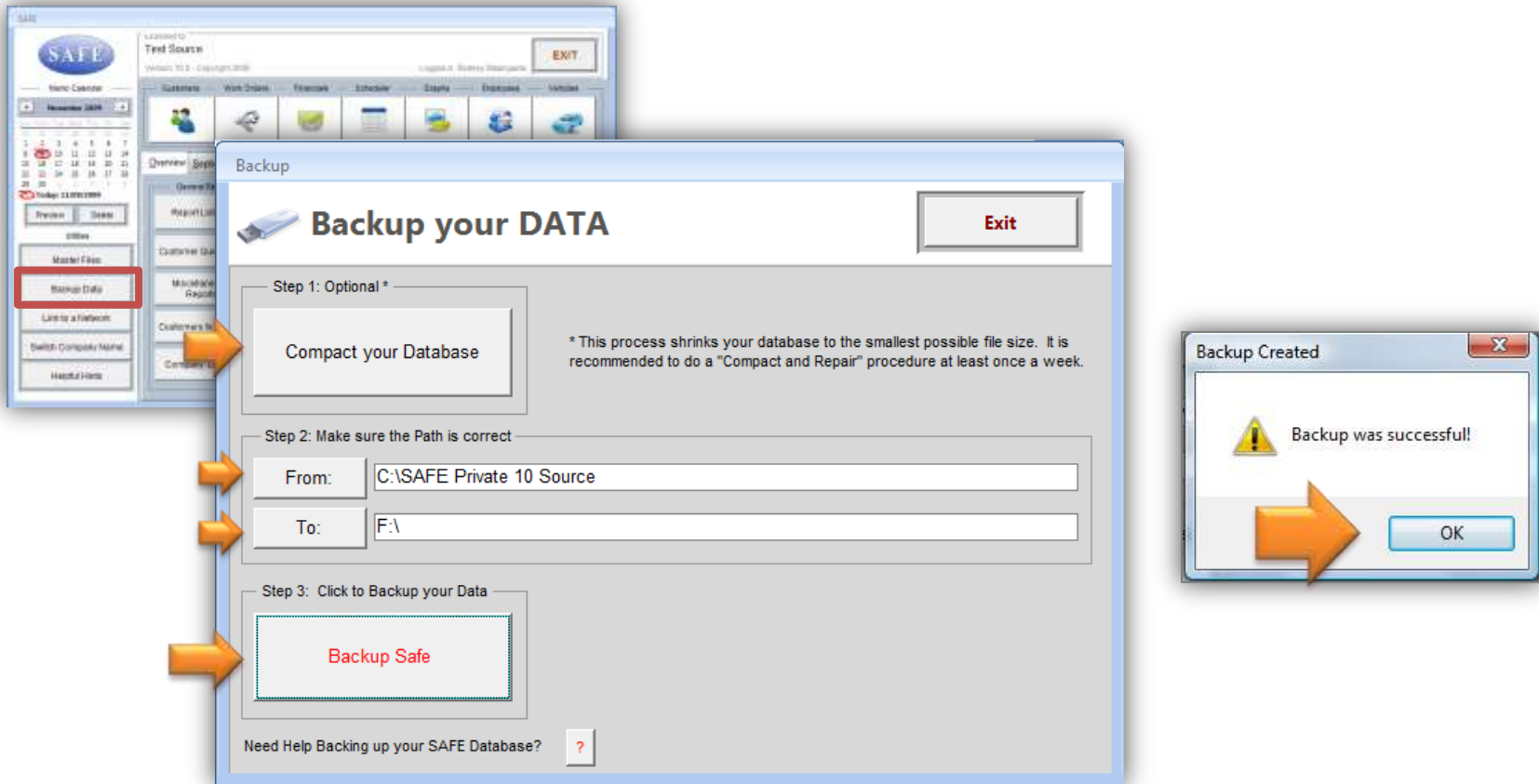


Backing up your SAFE™ Data



Backing up your SAFE™ Data is as easy as 1...2...3

1. Click Backup Data from the Main Menu
2. Make sure you have your backup media (CD, USB, External Drive) ready
3. Also make sure you know what the drive letter is for this backup device (“G:\”, “J:\”)
4. Click Backup and wait until it says “Backup Successful”



Option: Click “Compact your Database” to “shrink” the file size of the database as much as possible.

Warning!!! Do not back your data up to your C:\ Directory (main drive) ONLY. If your computer crashes, you will LOSE your data!

That's it!

Please contact us if you need further assistance.

Go to www.thesafeprogram.com or email us at thesafeprogram@gmail.com